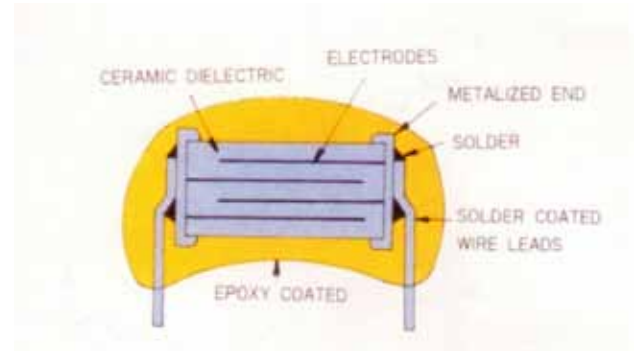
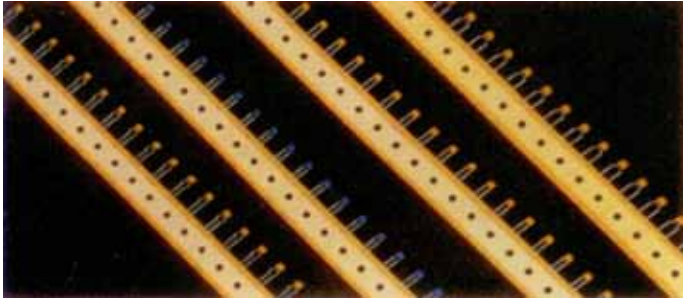


積層電容器 Multilayer Ceramic Capacitors



PART NUMBER SYSTEM

R	104	M	38	Z	F	B	56
(1)	(2)	(3)	(4)	(5)	(6)	(7)	(8)

(1) PRODUCT TYPE: R : Radial Leded Type

(2)CAPACITANCE:

104 = $10 * 104 = 100000\text{pf} = 100\text{nf} = 0.1\text{uf}$
 103 = $10 * 103 = 10000\text{pf} = 10\text{nf} = 0.01\text{uf}$
 101 = $10 * 101 = 100\text{pf} = 0.1\text{nf}$
 100 = $10 * 100 = 10\text{pf}$

(3)CAPACITANCE TOLERANCE:

J= $\pm 5\%$, K= $\pm 10\%$, M= $\pm 20\%$, Z= $+80\% / -20\%$

(4)SIZE CODE:

SIZE	Chips	W. max.	T. max.
38	0805 / 0603	3.8mm	2.5mm
50	1206	5.0mm	3.0mm

(5)TEMPERATURE CHARACTERISTIC:

C= NPO
 X= X7R
 Z= Z5U
 Y= Y5V

(6)WORKING VOLTAGE:

E = 25VDC, F = 50VDC, H = 100VDC, K = 200VDC

(7)PACKING:

T = Tape & Reel (Option)
 B = Bulk Pack (Standard)

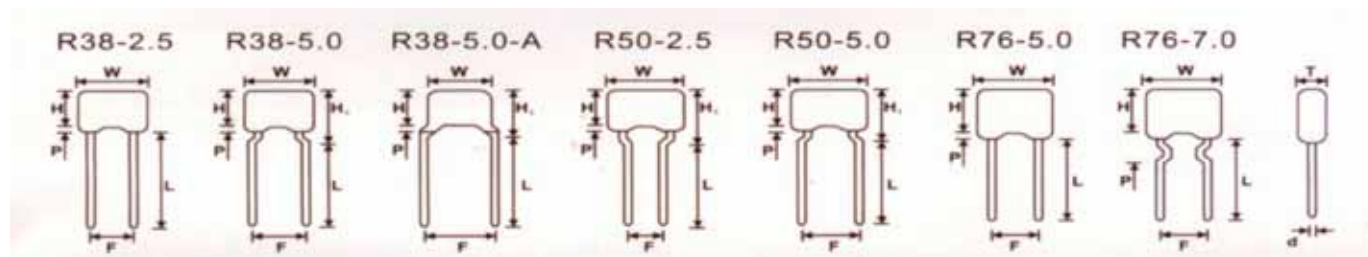
(8)LEAD STYLE:

56 = Lead Spacing : 5.0mm, Lead Length : 6.0mm (Standard)
 26 = Lead Spacing : 2.5mm, Lead Length : 6.0mm

積層電容器 Multilayer Ceramic Capacitors



SIZE CODE DIMENSION:



Size Code	Chip Size	W Max.	T Max.	H Max.	H1 Max.	F	L	P Max.	S
R38-25(mm)	0805	3.8mm	2.5mm	3.8mm		2.5±0.25mm			
R38-5.0(mm)	0805	3.8mm	2.5mm	3.8mm	7.6mm	5.0±0.5mm			
R38-5.0-A 5.0mm, 45° 角	0805	3.8mm	2.5mm	3.8mm	7.6mm	5.0±0.5mm	5.0±0.5mm 6.0±0.5mm		
R50-2.5(mm)	1206	5.0mm	3.0mm	5.0mm	7.6mm	2.5±0.25mm	10.0±0.5mm 16.0±1.0mm	1.5mm	0.5±0.5mm
R50-2.5(mm)	1206	5.0mm	3.0mm	5.0mm	7.6mm	5.0±0.5mm	30.0±1.0mm		
R76-5.0(mm)	1812	7.6mm	3.8mm	7.6mm		5.0±0.5mm			
R76-5.0(mm)	1812	7.6mm	3.8mm	7.6mm		7.0±0.5mm			